

# National Theatre



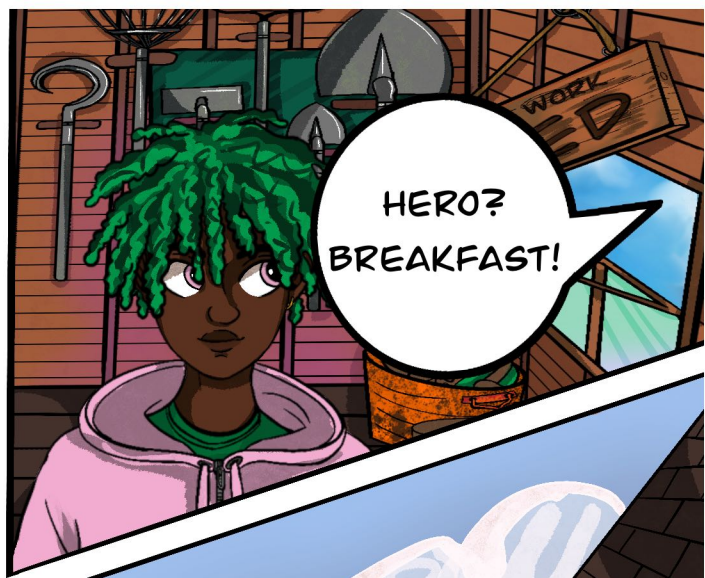
THE STORY OF  
**SPEAK UP**

YEAR 1





I THINK IT'S READY...



HERO? BREAKFAST!



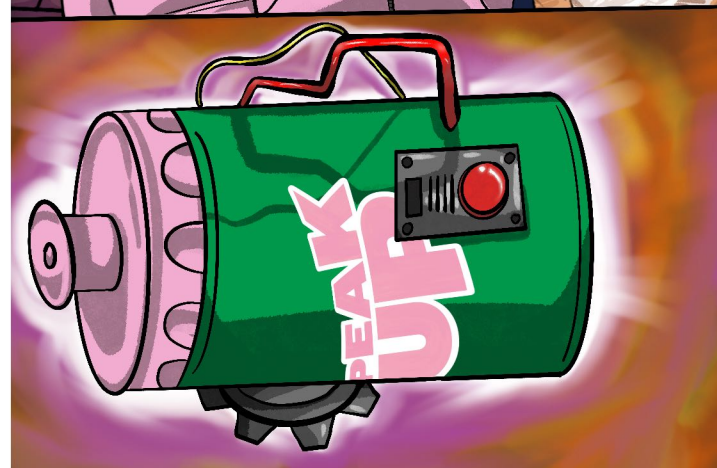
IN A MINUTE, DAD!

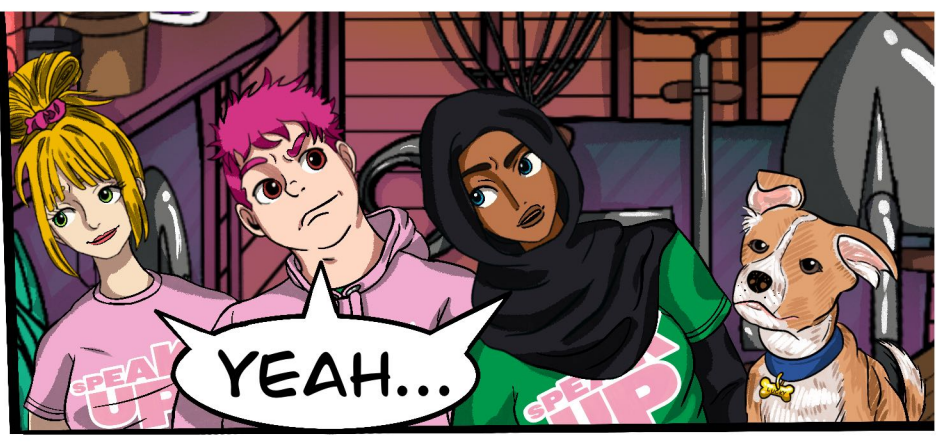


LET'S TEST THIS OUT!

EUREKA!





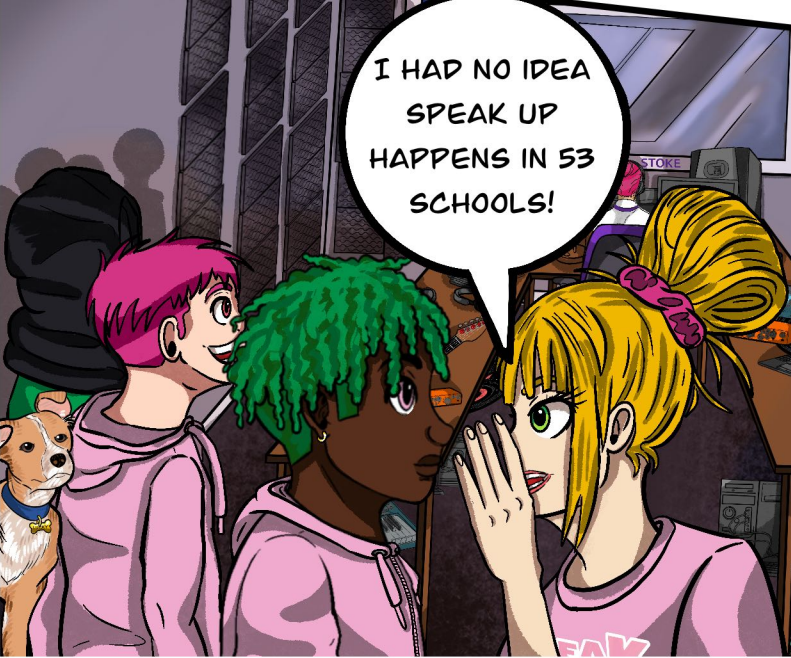
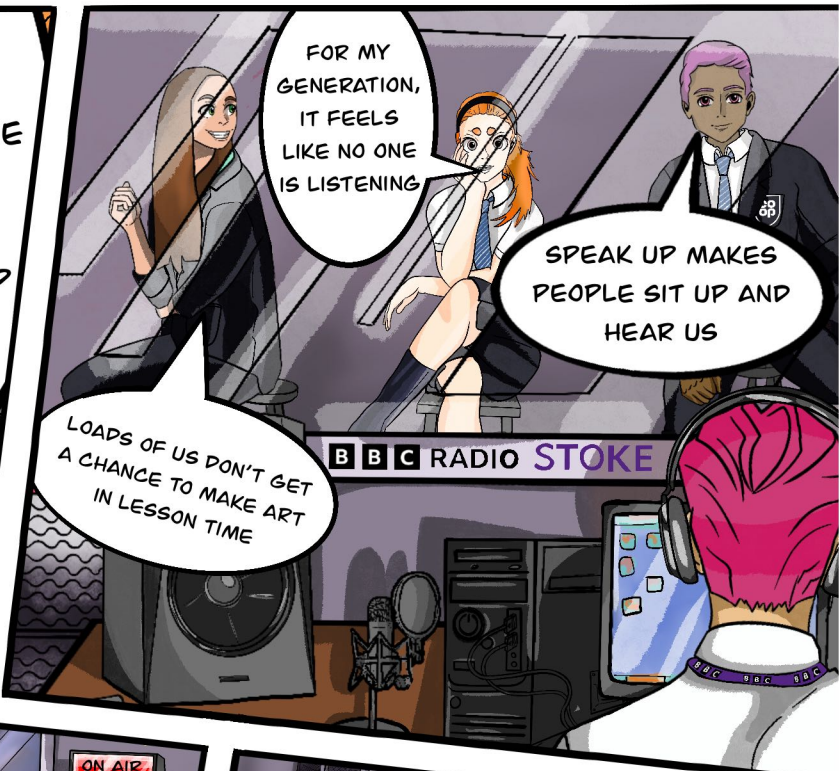
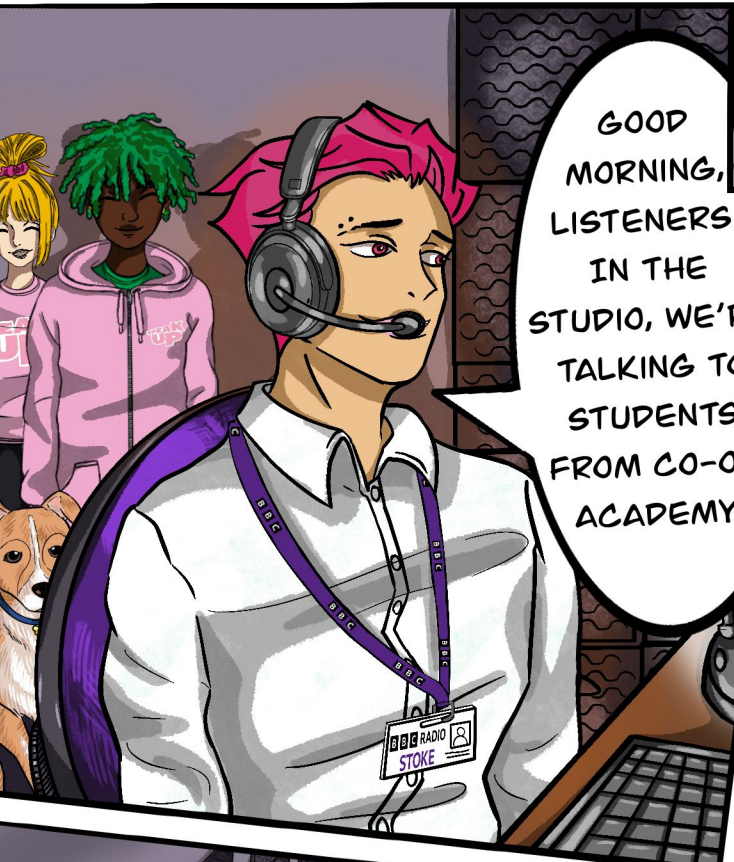


THE SPACE-TIME  
CONTINUUM

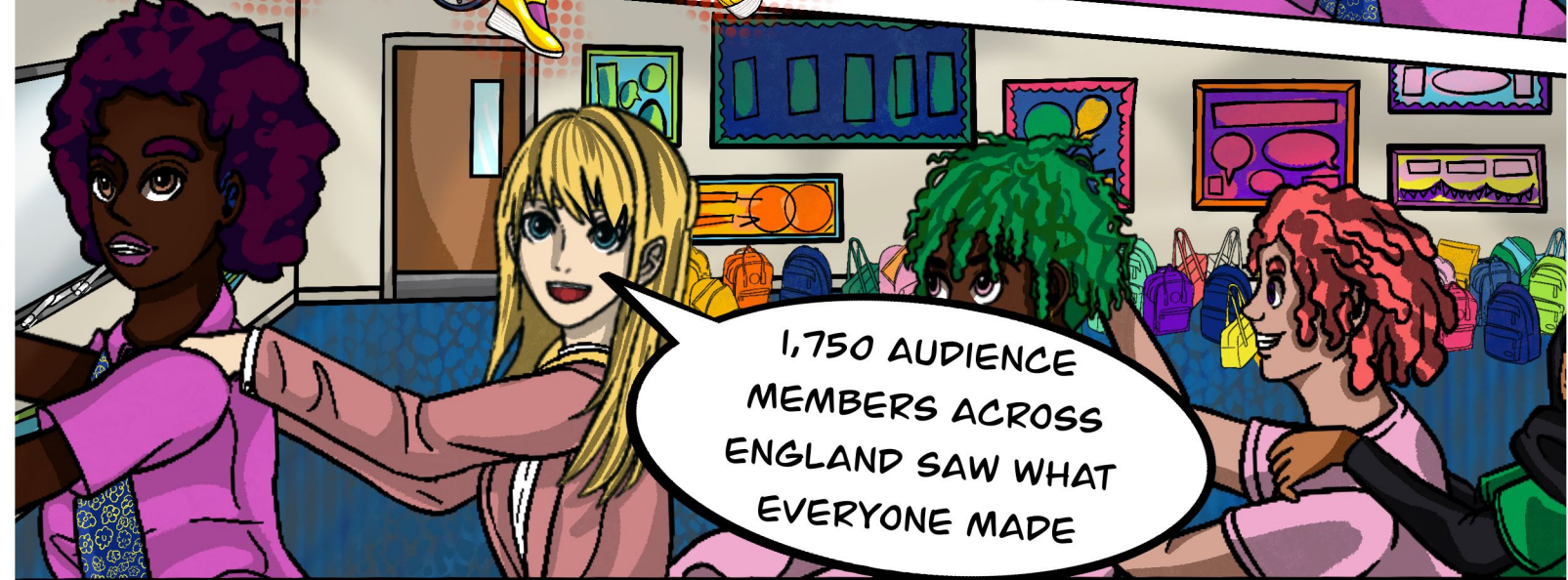
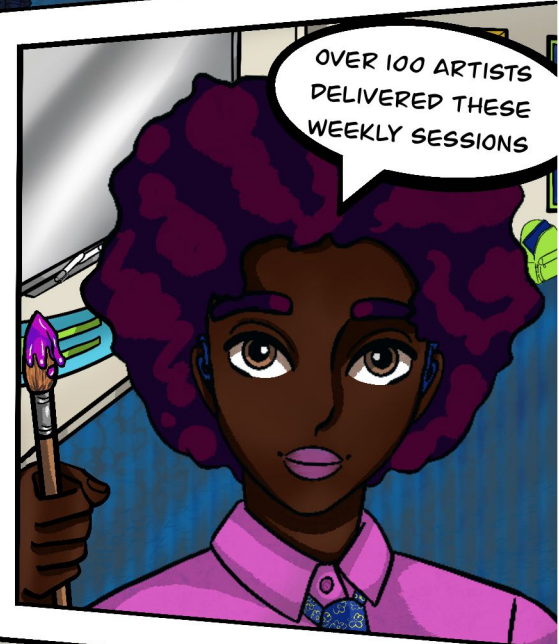
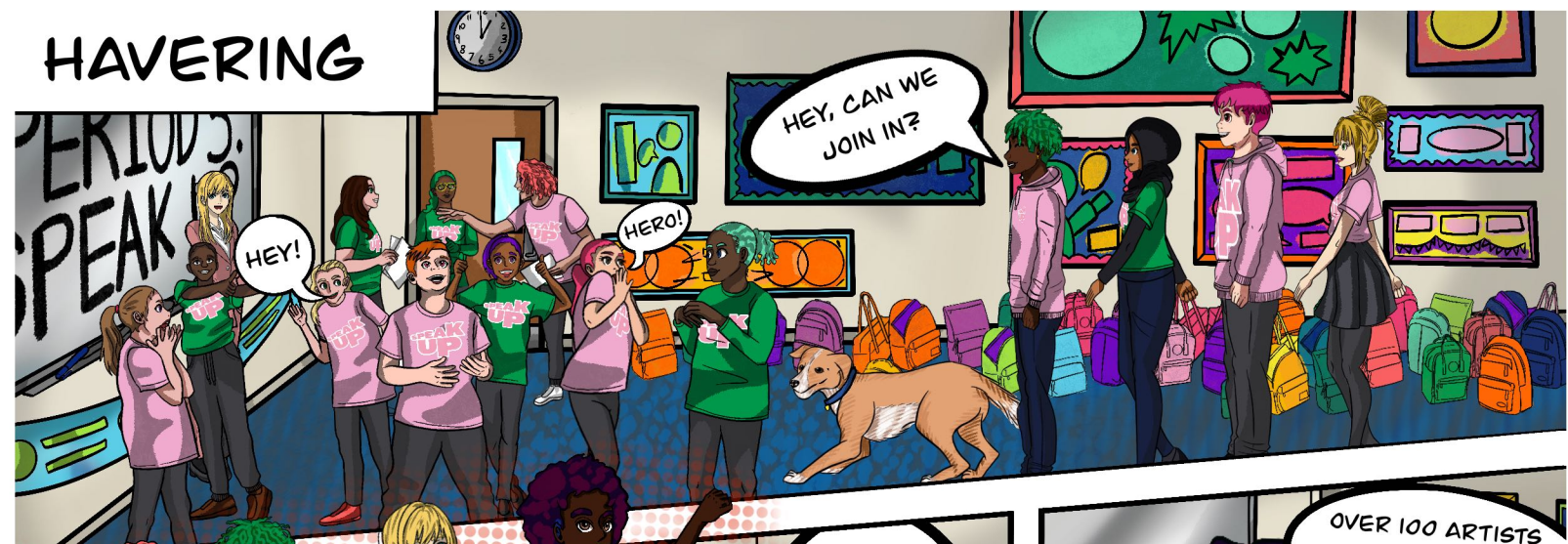
LET'S  
GO!



# STOKE-ON-TRENT



# HAVERING



# NORTH DEVON





# GREATER MANCHESTER



THERE WERE SO MANY EVENTS ACROSS THE COUNTRY

WE CELEBRATED OUR PRIDE, CULTURE AND DIVERSITY WITH A BIG FASHION SHOW!

I STEPPED OUT OF MY COMFORT ZONE AND LOVED EVERY SECOND OF IT

THAT DAY, WE CELEBRATED OUR AUTHENTIC SELVES

I WORE CLOTHES THAT CELEBRATED MY HERITAGE



TIME TO GO

# DONCASTER



THIS YEAR, WE TOOK CENTRE STAGE!



SHHH

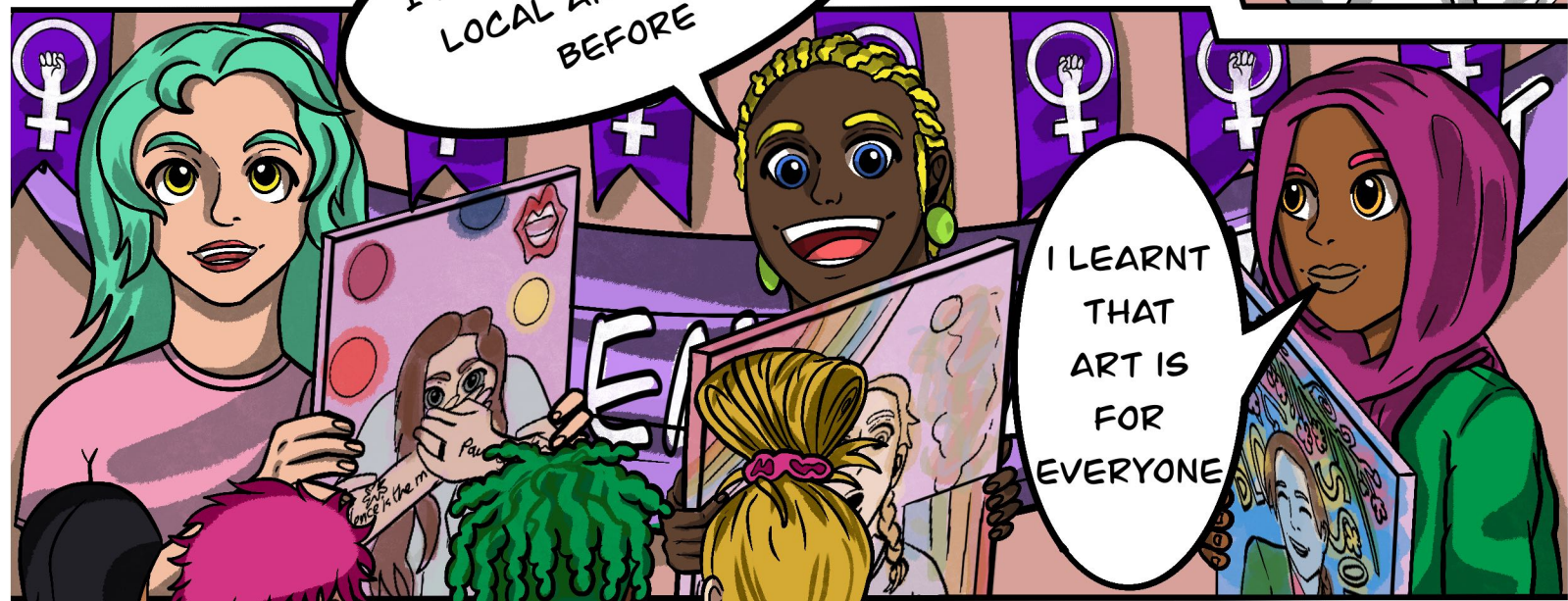
PASS THE POPCORN

CAN I PAT THE DOG?

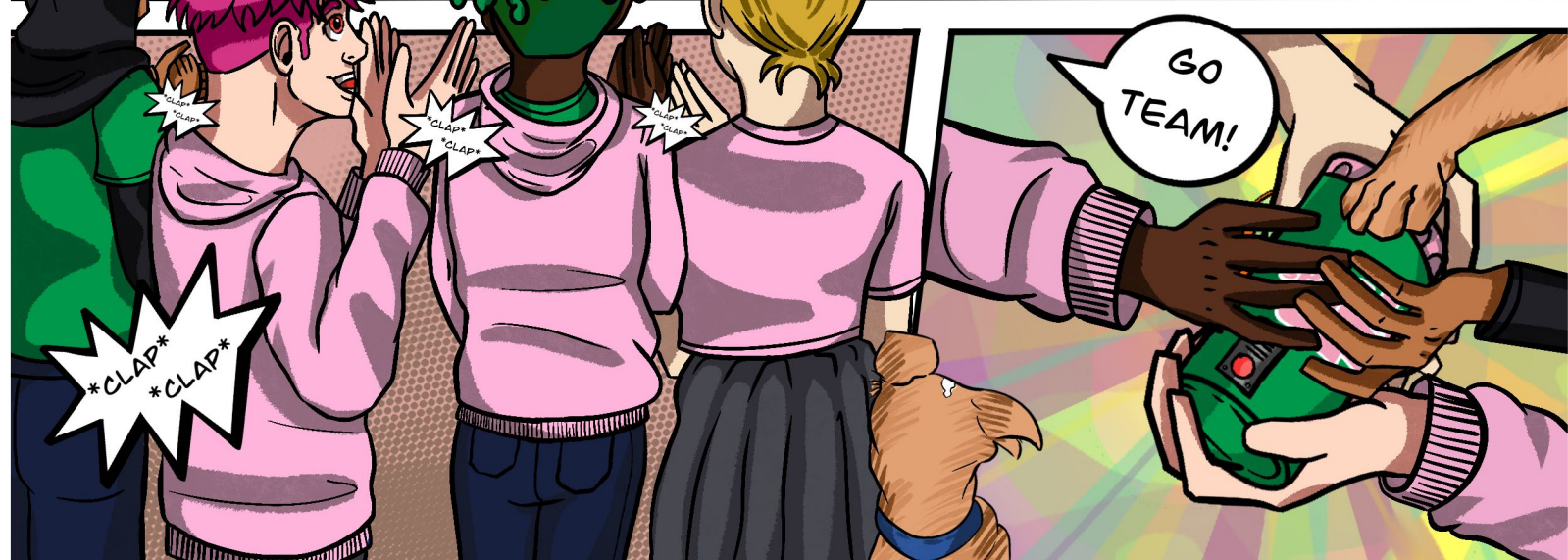
I'D NEVER VISITED MY LOCAL ARTS VENUE BEFORE



WE HAD SO MUCH FUN!



I LEARNT THAT ART IS FOR EVERYONE



GO TEAM!

\*CLAP\*  
\*CLAP\*

# WAKEFIELD

WE TOOK OUR MESSAGE TO THE TEACHERS. WE ASKED THEM TO PRIORITISE FUN IN SCHOOL!

I'D NEVER SPOKEN IN FRONT OF A CROWD BEFORE

MY STUDENTS MADE ME RETHINK HOW WE MAKE DECISIONS IN SCHOOL

INCREDIBLE

WOW

WHAT IF OUR MEASURES OF SUCCESS ARE DIFFERENT TO THE ONES YOU SUGGEST?

WE SPEAK UP, YOU LISTEN, TOGETHER WE TAKE ACTION!

COME ON GUYS

SPEAK UP

SPEAK UP  
WHAT IS IMPORTANT  
TO STUDENTS!  
OCT 12.33

WHAT IS IMPORTANT  
YOU SUGGEST  
AT

SPEAK UP

# LEICESTER

WE TOOK OVER OUR  
DRAMA STUDIO

How Do We Want  
to change the  
World?

WE SPOKE UP  
ABOUT...

ENVIRONMENT

IDENTITY

MENTAL  
HEALTH

ACTIVISM

MY TEACHERS AND  
FRIENDS CAME TO SEE  
WHAT WE CREATED

ART HELPED  
ME SAY THE  
THINGS I  
NEEDED TO SAY

THAT WAS  
SPECIAL

WOLVERHAMPTON

THIS IS SO COOL

GRAND THEATRE

WE PREMIERED OUR SHORT FILM ABOUT KNIFE CRIME AT OUR LOCAL THEATRE

GRAND THEATRE

KNIFE CRIME IS ON THE RISE, WE HAD TO SPEAK UP

I WROTE A PERFORMANCE POEM FROM SCRATCH

WE SCREENED THE FILM TO FAMILIES AFFECTED BY KNIFE CRIME

ART CAN SOMETIMES HELP HEAL

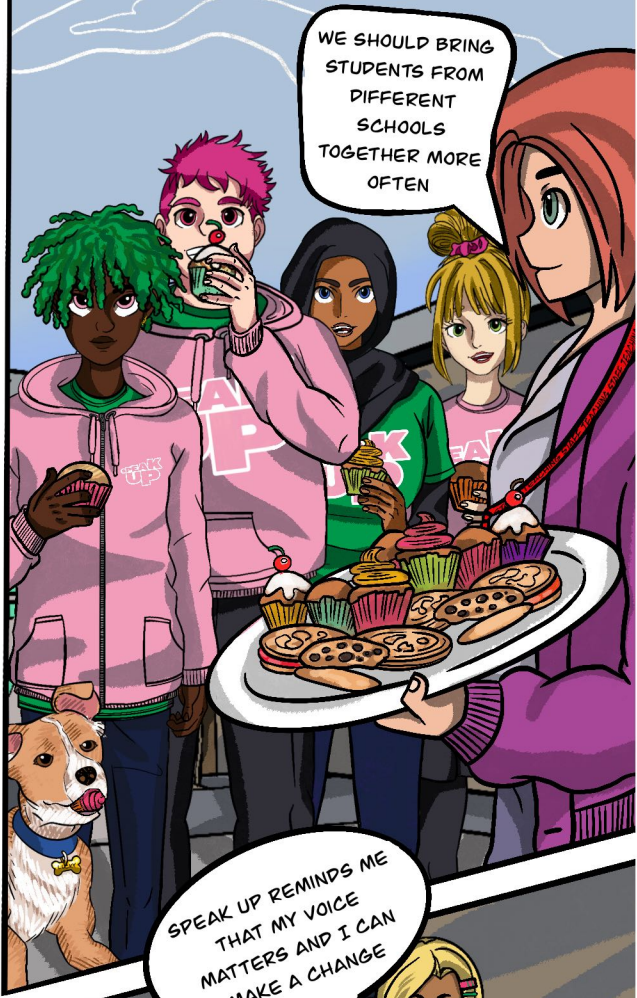
ONE MORE TIME?

# SUNDERLAND



THE PLACE IS MINT!

WELCOME TO THE NORTH EAST



WE SHOULD BRING STUDENTS FROM DIFFERENT SCHOOLS TOGETHER MORE OFTEN

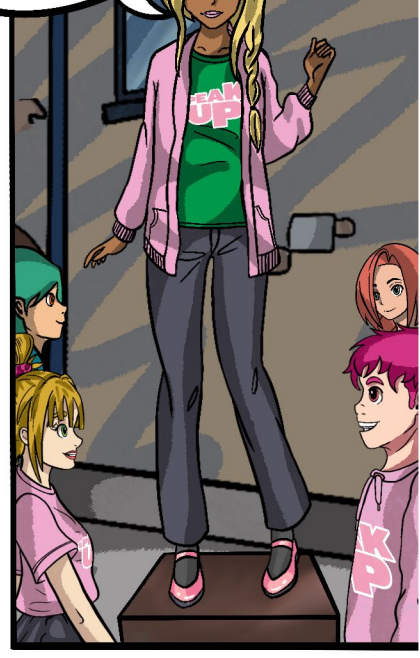
SPEAK UP REMINDS ME THAT MY VOICE MATTERS AND I CAN MAKE A CHANGE



SPEAK UP HAS SHOWN MY STUDENTS THEY ARE THE LEADERS OF TOMORROW



CO-CREATING HAS BEEN A REVELATION IN MY CREATIVE PRACTICE



SHALL WE GO HOME?

HOME







**SPEAK  
UP**

# National Theatre

# SPEAK UP



THANKS FOR READING. SEE YOU NEXT YEAR!

THEATRE NATION PARTNERS

WOLVERHAMPTON  
**GRAND**  
THEATRE



LANDMARK  
THEATRES

**sunderland  
empire**  
*The West End of the North East*

**CAST**



**LOWRY**



WITH THANKS TO

the **Mohn Westlake** foundation

*theatre  
Royal*  
**Wakefield**



JOIN THE CONVERSATION  
BY FOLLOWING ALONG  
ON SOCIAL MEDIA  
**#NTSPEAKUP**

CREATIVE ASSOCIATE

**LUNG**

ILLUSTRATED BY  
INDIA BUXTON  
[@SKULLY\\_ART](https://www.instagram.com/skully_art)  
[WWW.INDIA-BUXTON.COM](http://www.india-buxton.com)



TEXT BY MATT WOODHEAD